

InDesign CS5.5

Export to PDF for high resolution
CMYK



Create a PDF export preset

- Under the File menu/Adobe PDF Presets/ Define... New...

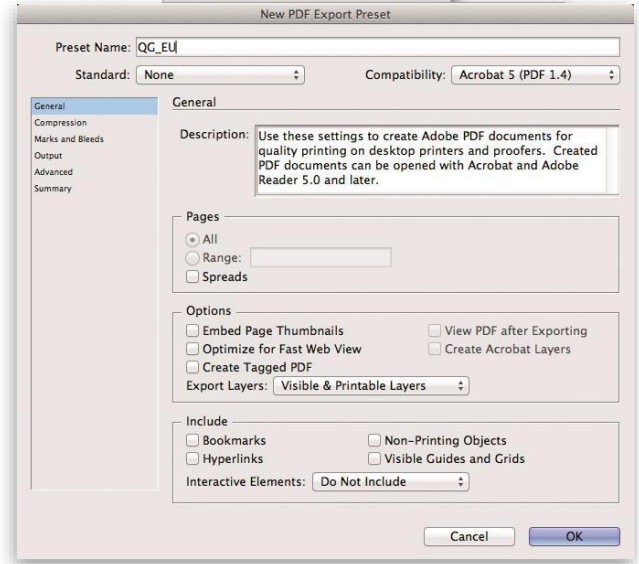


General

- Name the preset

Options

- Standard: None
- Compatibility: Acrobat 5 (PDF 1.4)



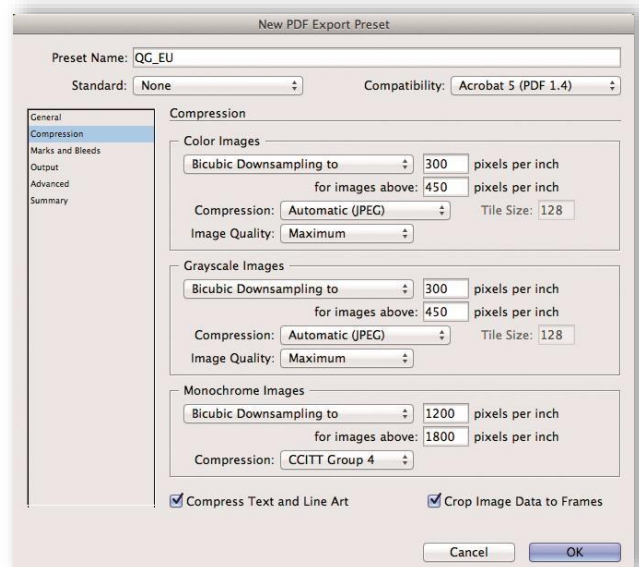
Compression

Color Images & Grayscale Images

- Bicubic Downsampling to 300 ppi for images above 450 ppi
- Compression: Automatic (JPEG)
- Image Quality: Maximum

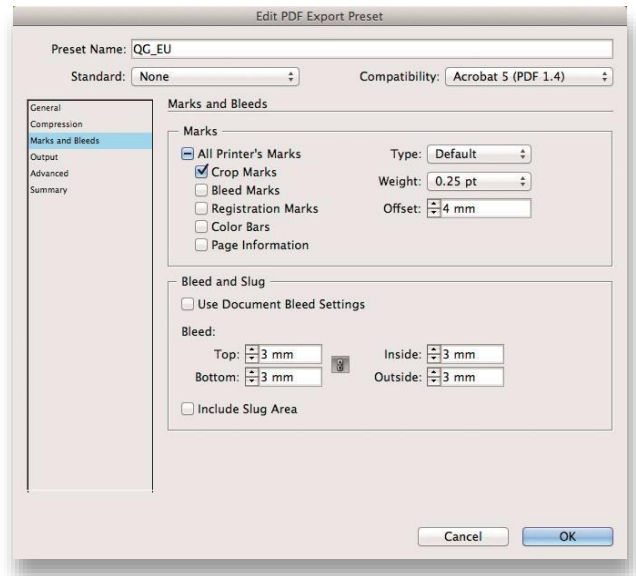
Monochrome Images

- Bicubic Downsampling to 1200 for images above 1800 ppi
- Compression: CCITT Group 4
- Compress Text and Line Art: On
- Crop Image Data to Frames: On



Marks & Bleed

- CropMarks: On
- Page Information: Off
- Type: Default
- Weight: 0.25 pt
- Offset: 4mm
- Bleed: AllSides: 3mm



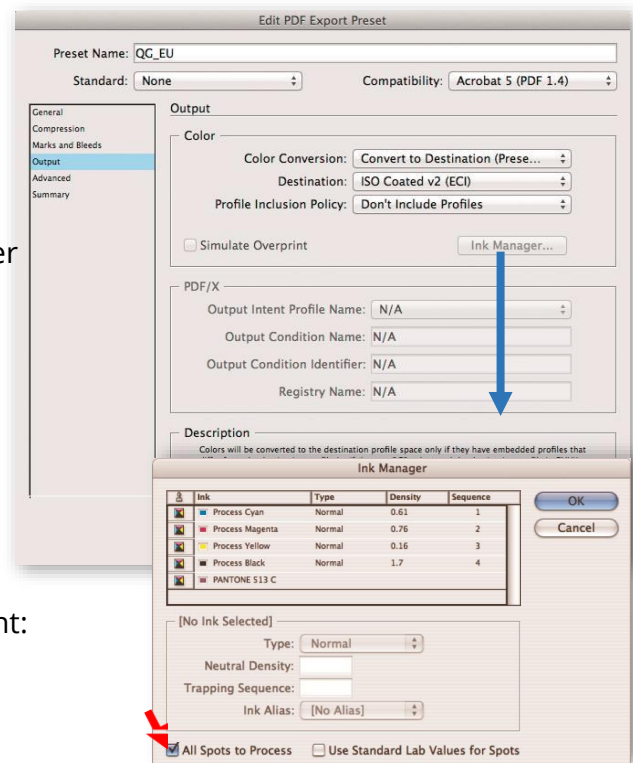
Output

- Color Conversion
Convert to Destination (Preserve Numbers)
- Destination: ICC Profile – according to the paper
- Profile Inclusion Policy: Don't Include Profiles

Ink Manager

Ink Manager isn't available when creating an Export Preset. This setting is available at time of output, but only if there are spot colors used in your document:

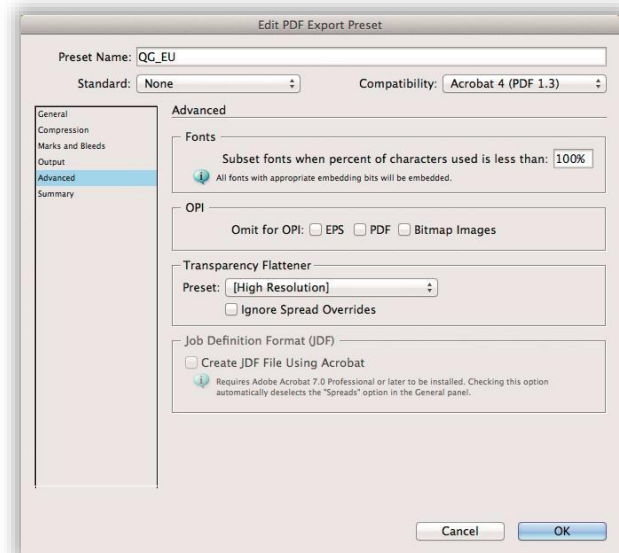
- All Spots to Process: On (if you intend only CMYK output)
- All Spots to Process: Off (to retain spot color in final output)



Advanced

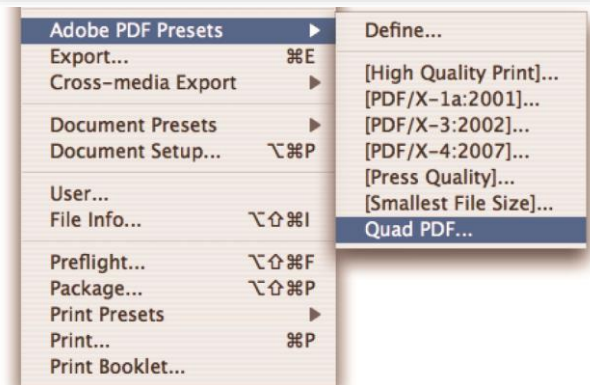
- Subset fonts when percent of characters used is less than: 100%
- Transparency Flattener Preset: High Resolution
- Ignore Spread Overrides: Off

- Click OK
- Click Done in the Adobe PDF Presets Dialog box



Print using a preset

- Choose File/Adobe PDF Presets/desired Preset
- Or choose it from the Preset pull down at the top of the Export Dialog box.
- Quad requires single-page PDFs
Always export one page at a time
- Check "All Spots to Process" in Ink Manager under the Output tab



Saving and loading export presets

Instead of recreating it on all necessary workstations, save and archive the Export Preset for future use.

1. Choose File/Adobe PDF Presets/Define
2. Click on the Preset and then click Save As
3. Name and save it in the desired location

